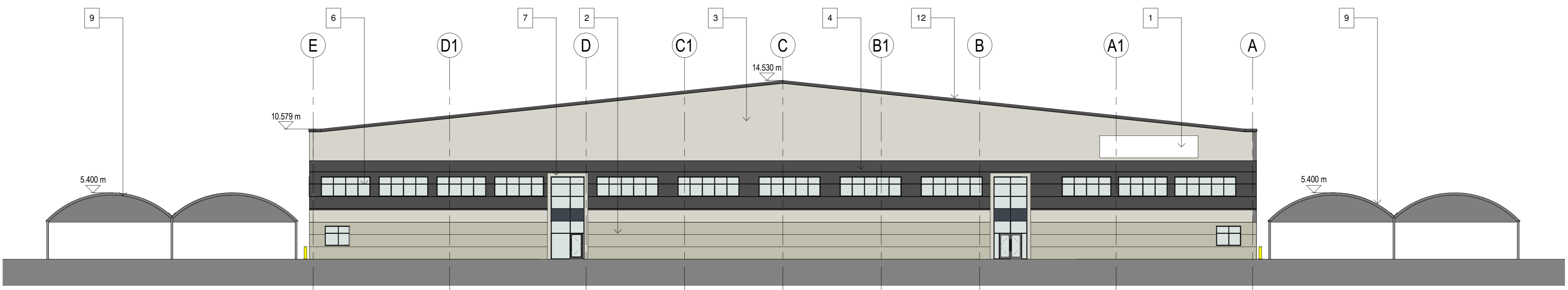
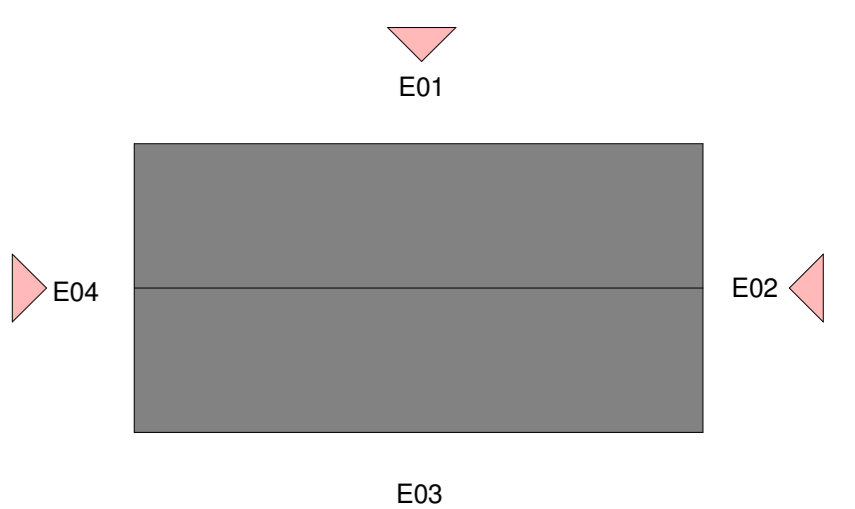


E01 - NORTH ELEVATION
 1 : 200

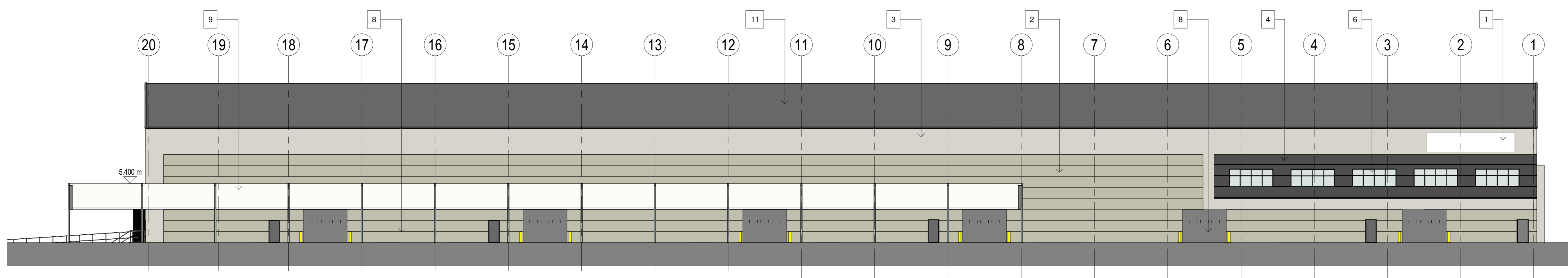


E02 - EAST ELEVATION
 1 : 200

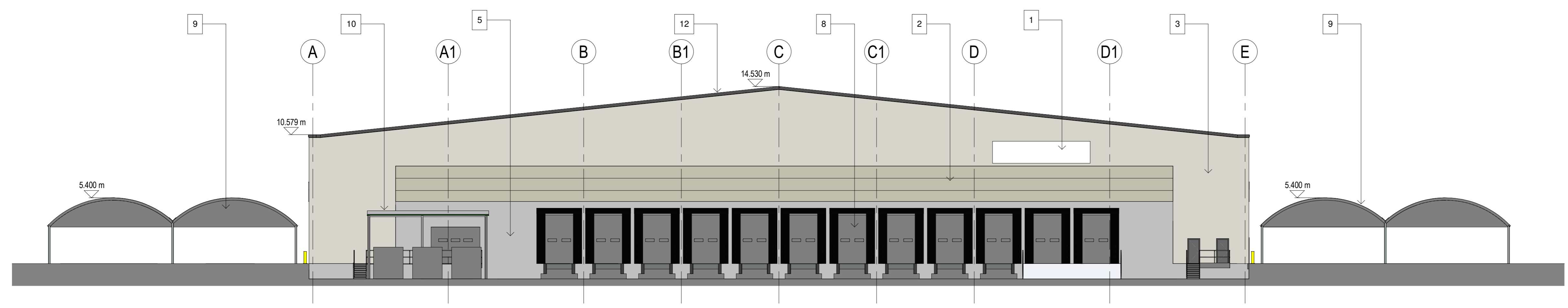
- 1 INDICATIVE SIGNAGE LOCATIONS, SUBJECT TO SEPARATE APPLICATION.
- 2 MAIN WAREHOUSE: KINGSPAN KS1000RW COMPOSITE CLADDING PANEL (MICROPRIE) VERTICALLY LAID, COLOUR - WHITE GREY RAL 9002.
- 3 MAIN WAREHOUSE: KINGSPAN KS1000RW COMPOSITE CLADDING PANEL VERTICALLY LAID, COLOUR - WHITE GREY RAL 9002.
- 4 OFFICE: KINGSPAN KS1000RW COMPOSITE CLADDING PANEL (FLAT) VERTICALLY LAID - MERLIN GREY RAL 180 40 05.
- 5 LOADING DOCK CONCRETE SANDWICH WALL PANEL SYSTEM.
- 6 ALUMINUM CURTAIN WALLING SYSTEM.
- 7 ENTRANCE FEATURE TO BE COMPOSITE CLADDING SYSTEM. FRAME COLOUR ANTHRACITE GREY RAL 7016.
- 8 EXTERNAL DOORS. COLOUR ANTHRACITE GREY.
- 9 CANOPY POST AND ROOF STRUCTURE TO SPECIALIST DESIGN.
- 10 GALVANISED STEEL FRAME WASTE CANOPY.
- 11 KINGSPAN TORPEK SINGLE PLY MEMBRANE COMPOSITE ROOF. COLOUR: GREY.
- 12 POLYESTER POWDER COATED ALUMINUM KINGSPAN VERGE CAPPING. COLOUR GREY.



KEY
 1 : 2000



E03 - SOUTH ELEVATION
 1 : 200



E04 - WEST ELEVATION
 1 : 200

P2	PLANNING ISSUE.	30.04.20	EE	RK
P1	FIRST ISSUE.	29.04.20	EE	PW
Rev	Deviation	Date	Drn	Out

Status
 PLANNING



Floor 2, The Exchange, Station Parade, Harrogate, HG1 1TS
 01423 707 757
 admin@smrarchitects.co.uk

Project
 WATERBROOK, ASHFORD



Drawing Title
 PROPOSED ELEVATIONS

Proj Ref	Origin	Zone	Level	Type	Rate	Norm	Status	Rev
7361	SMR	03	ZZ	DR	A	2102	S4	P2
SMR Job Ref	Sheet	Scale	Drawn	Scale	Drawn	Scale	Drawn	Scale
7361-03-2102	A0	NOTED						